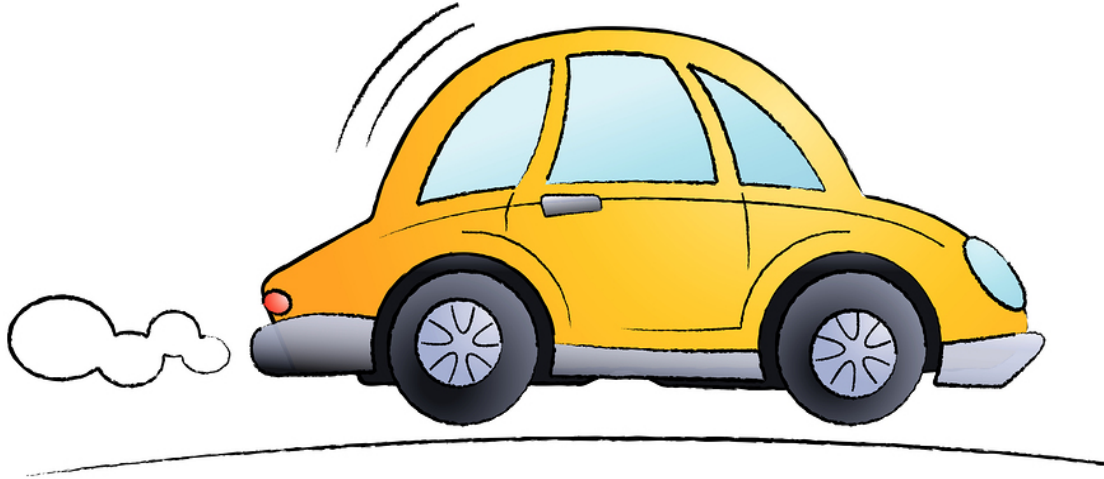


# NEED TRANSPORTATION?



## PUBLIC TRANSPORTATION

**PLACER COUNTY TRANSIT** **1-916-745-7560**  
Links to Rocklin, Sierra College, Galleria & Roseville Transit

**LINCOLN CIRCULATOR Fixed Route in Lincoln** **1-916-745-7560**  
Placer County Transit Transfer Point at Twelve Bridges Library

**LINCOLN DIAL-A-RIDE Curb-to-Curb** **1-916-745-7560**  
For discounted tickets, call the Lincoln Hills Foundation  
Coordinator **1-916-543-8436**

## OTHER TRANSPORTATION OPTIONS

**CALL FOR REFERRALS – Neighbors InDeed** **1-916-223-2763**

**ROAD TO RECOVERY – cancer related only**  
(American Cancer Society) **1-800-227-2345**

**CALL FOR REFERRALS & INFO – (Seniors First)** **1-530-889-9500**

*Information provided by the Volunteers of Neighbors InDeed*



Rev 8/25/23

[www.neighborsindeed.org](http://www.neighborsindeed.org)